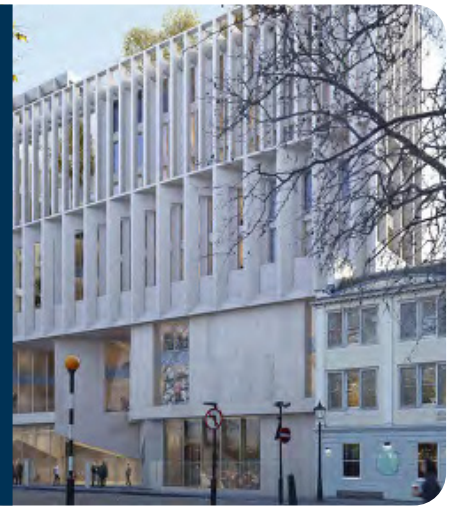


DESIGN CASE STUDY

Lincoln's Inn Fields



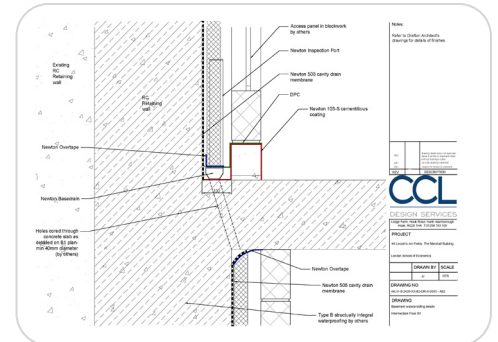
Waterproofing of the London School of Economics, The Marshall Building, Lincoln's Inn Fields, London.



THE CHALLENGE

CCL Design Services were appointed by Mace Group to act as the structural waterproofing principal designer.

The world-renowned London School of Economics Marshall Building at 44 Lincoln's Inn Fields includes an extensive two-storey, mixed-use basement to house plant areas, squash courts, changing facilities and a sports hall, covering a total of over 2,250m² of floorspace.



THE SOLUTION

A combined waterproofing strategy was employed on this project, incorporating Type A, B & C systems, meeting the client's requirement for a grade 3 environment to be maintained throughout the lifespan of the building.

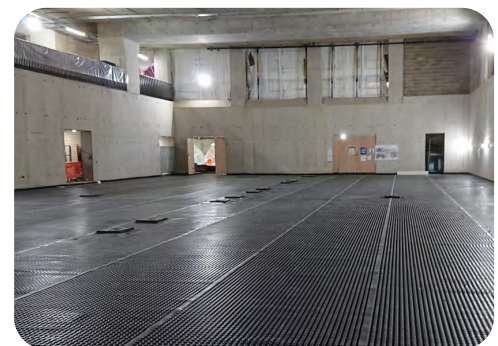
CCL's CSSW qualified design team specified the Type A & C elements of waterproofing strategy, comprising of a liquid membrane and a cavity drain membrane (CDM) system.

Newton 103-S liquid waterproofing membrane was chosen, to be applied internally to the concrete surfaces as a barrier to water (Type A).

Approximately 2,250m² of Newton 520 eco membrane was then specified to the floor, in conjunction with over 570m² of Newton 508 membrane for the walls, to create the CDM System (Type C).

Newton Basedrain drainage channels were then specified to ensure any water captured by the membrane is directed to the point of discharge, with the entire system then sealed with Newton OverTape.

CCL's design team produced project specific CAD drawings for each element of the design, backed by CCL's £10m PI Insurance, along with a collateral warranty.



THE RESULT

The benefits of using both CCL's Design and Contracting service ensured the works were designed and installed well within the project time limit.

The Newton recycling service was also a great success, recycling 115 kg of HDPE waste and therefore preventing over 132 kg of CO₂ emissions.

PRODUCTS

Newton CDM System

Newton 508 Cavity Drain

Newton 520 eco Cavity Drain

Newton BASEDRAIN

Newton 906 LIME INHIBITOR

Cast Contracting Ltd

01256 763100 info@ccl-ltd.net www.ccl-waterproofing.co.uk

Lodge Farm Hook Road North Warnborough Hook Hampshire RG29 1HA

